

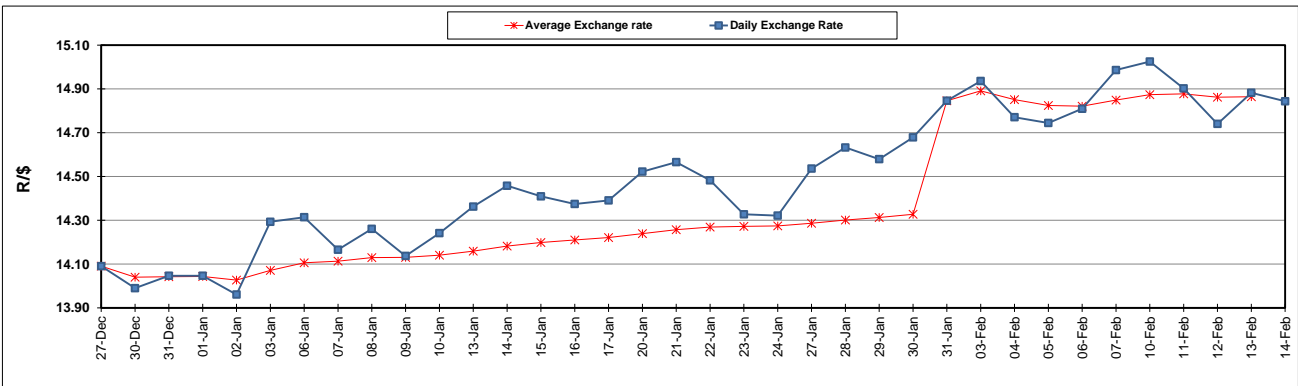
	PETROL 95 ULP	PETROL 93 ULP & LRP	DIESEL 0.05%	DIESEL 0.005%	ILL. PAR.
GAUTENG PUMP PRICE (SA c/l) AS FROM 05/02/2020	1,603.000	1,571.000	-	-	-
WHOLESALE PRICE (SA c/l) AS FROM 05/02/2020	-	-	1,457.260	1,462.660	924.728
SINGLE NATIONAL MAXIMUM RETAIL PRICE	-	-	-	-	1,176.000
BASIC FUEL PRICE - 14/02/2020 (SA c/l)	673.734	661.968	694.031	700.702	673.720
PRESS RELEASE CONTRIBUTION TO BFP 05/02/2020 - 14/02/2020 (SA c/l)	686.970	664.970	737.630	743.030	734.128
UNIT OVER/(UNDER) RECOVERY - 14/02/2020 (SA c/l)	13.236	3.002	43.599	42.328	60.408
AVERAGE BASIC FUEL PRICE 31/01/2020 - 14/02/2020	666.722	655.353	685.236	691.300	669.339
AVERAGE UNIT OVER/(UNDER) RECOVERY 31/01/2020 - 14/02/2020	23.793	13.162	53.758	53.094	65.608

ANALYSIS MOVEMENT OF AVERAGE OVER/(UNDER) RECOVERY

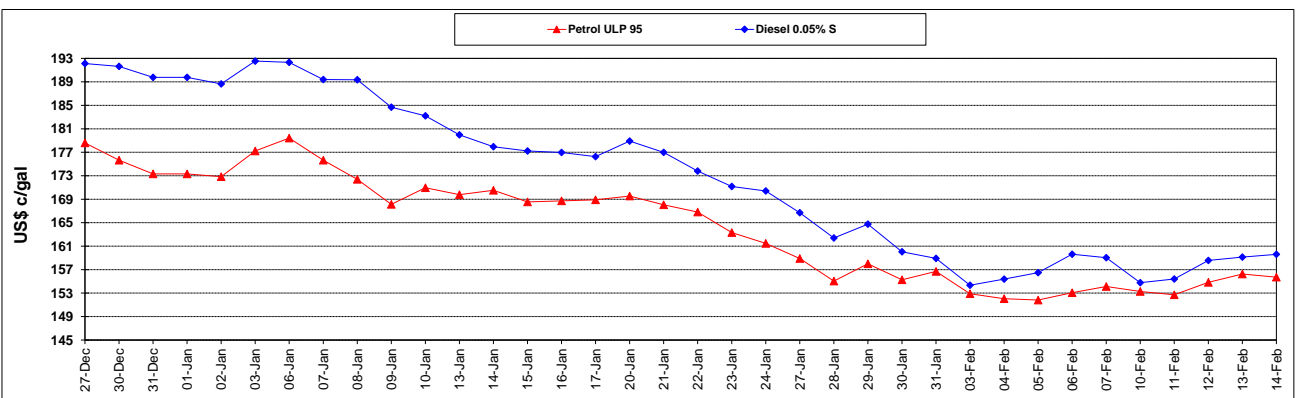
	PETROL 95	PETROL 93	DIESEL 0.05%	DIESEL 0.005%	ILL. PAR.
- MOVEMENT IN INTERNATIONAL PRODUCT PRICES	47.784	36.744	78.415	77.969	89.692
- MOVEMENT IN EXCHANGE RATE	(23.991)	(23.582)	(24.657)	(24.875)	(24.085)
AVERAGE UNIT OVER/(UNDER) RECOVERY 31/01/2020 - 14/02/2020	23.793	13.162	53.758	53.094	65.608

R/\$ EXCHANGE RATE - (R/\$14.8436 - 14/02/2020)

EXCHANGE RATE USED IN BASIC FUEL PRICE



INTERNATIONAL PRODUCT PRICES OF BASKET USED IN BASIC FUEL PRICE



BASIC FUEL PRICE IN SA CENTS PER LITRE

